

Unicorn Tours 15th Anniversary Celebration
New York City Day Trip
Holiday Shopping
15th Person to Sign-up goes FREE!

November 29, 2018
 Thursday

Estimated arrival in *The Big Apple* by 11:30am (always based on traffic conditions) for shopping, exploring, dining, with time to even take in a matinee performance on Broadway or Radio City Rockettes Christmas Spectacular. During your wanderings, be sure to see the giant Christmas Tree in Rockefeller Center!

You'll be dropped-off near *Time Square* and picked-up at the same location at 6:30pm for departure home. There is plenty of room on the bus for bags filled with all the bargains found during your day of holiday shopping.

NOTE: DO NOT purchase non-refundable tickets for Broadway Matinee Shows or Radio City Christmas Spectacular Matinee until we have the minimum of 25 passengers needed to be a guaranteed departure. Unicorn Tours will notify you when it is safe to go ahead and purchase show tickets. The only Radio City show you can do is the 2pm matinee. Any Broadway shows must be out in time to depart on our bus at 6:30pm.

Please note: Unicorn Tours is not responsible for NYC arrival delay caused by traffic conditions

With games and movies on the bus, you'll arrive in the *Big Apple* before you know it!

Included:

- Travel by luxury motorcoach
- Fully Escorted by Professional Tour Director
- Games and movies on the bus
- Day at leisure to enjoy the city

Not Included: Gratuities for Tour Director and Driver

Cost per person: \$189

Optional Trip Cancellation Insurance available & recommend \$18.90 per person due at booking

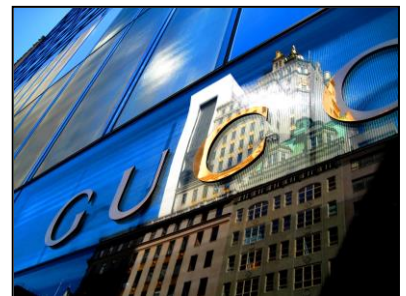
A minimum of 25 passengers required for guaranteed departure

Transportation: Yankee Bus Company

<u>Location</u>	<u>Depart</u>	<u>Return</u>
Haverhill	6:00am	12:00 midnight
Lawrence	6:15am	11:45pm
Chelmsford	6:30am	11:30pm

NOTE: Lawrence Passengers: New Pick-up Location

"North Andover Mall" 350 Winthrop Avenue, North Andover, MA 01845 – RT 114 – ¼ mile east of old pick-up on RT 114





From I-495 North take Exit #42A (RT 114 East) – at end of exit bear right and the Mall (plaza) is ¼ mile down on your left. Park near the Payless Shoe Store (use spaces closest to street so as not to take their customers parking spaces). **DO NOT PARK NEAR MARKET BASKET**

From I-495 South take Exit#42A (RT 114 East) – at end of ramp turn right (go under I-495) and continue of RT 114 East for about ¼ mile – North Andover Mall will be on your left. Park near the Payless Shoe Store (use spaces closest to street so as not to take their customers parking spaces). **DO NOT PARK NEAR MARKET BASKET**

